

HEALTHY AND WASTE CAPS,

A ONE WAY AIR CHECK VALVE TECHNOLOGY

Before

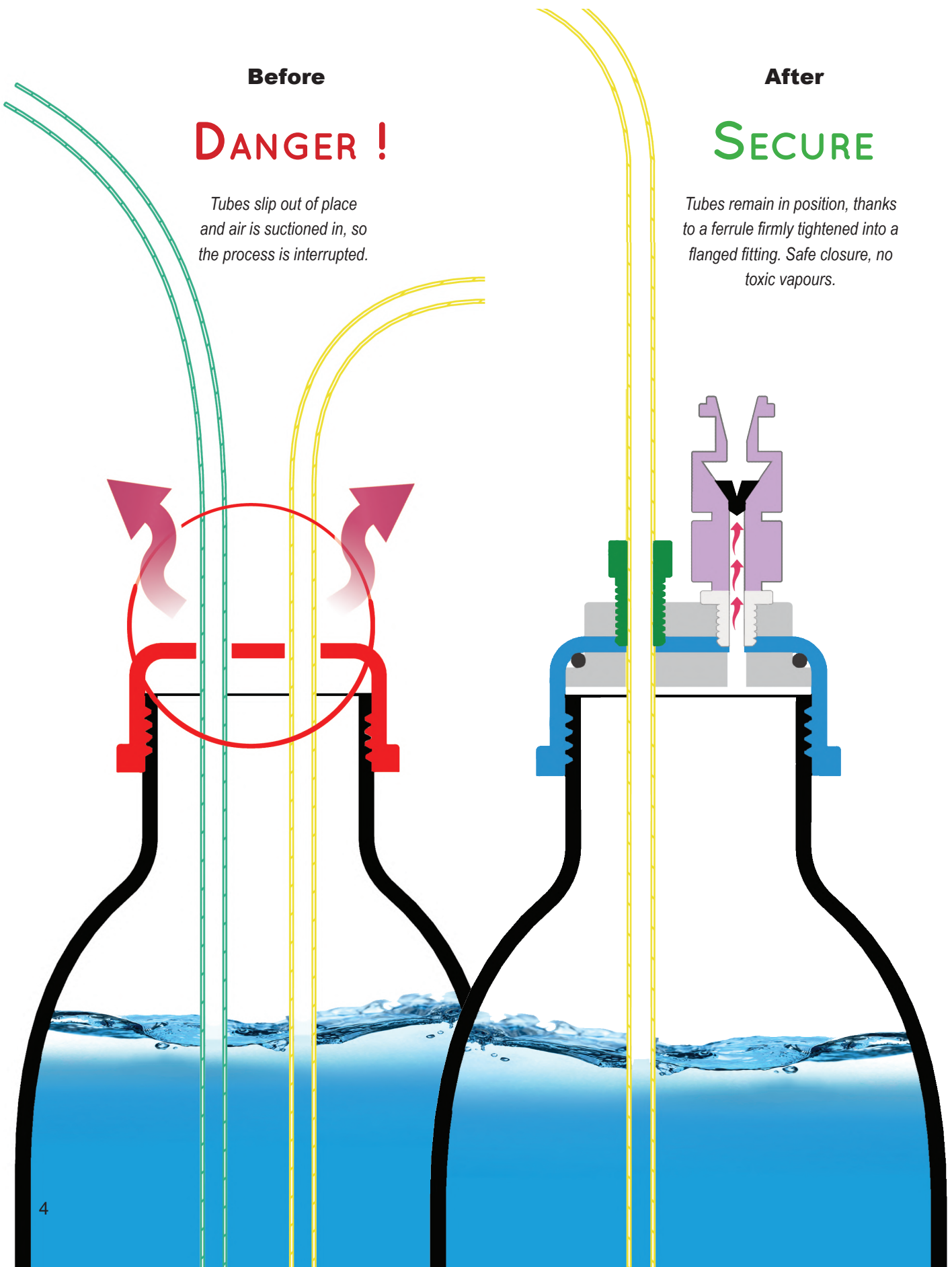
DANGER !

Tubes slip out of place and air is suctioned in, so the process is interrupted.

After

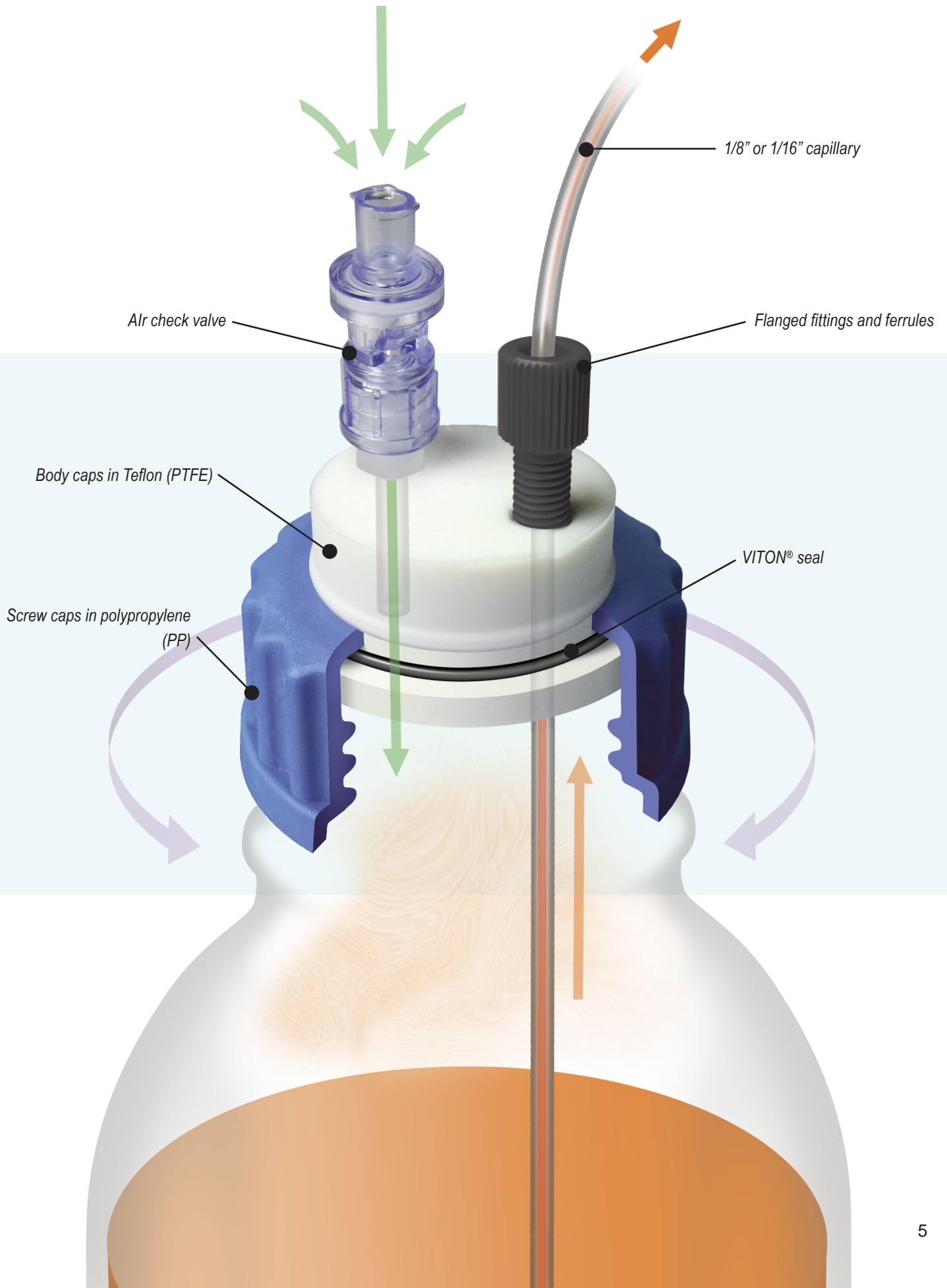
SECURE

Tubes remain in position, thanks to a ferrule firmly tightened into a flanged fitting. Safe closure, no toxic vapours.



HOW DOES IT WORK ?

A TECHNOLOGY TO PROTECT YOUR HEALTH



HEALTHY AND WASTE CAPS,

PRE-INSTALLED
ON YOUR
SMART HEALTHY CAPS!

A ONE WAY AIR CHECK VALVE TECHNOLOGY

Smart Healthy Caps are in response to modern laboratory safety regulations.

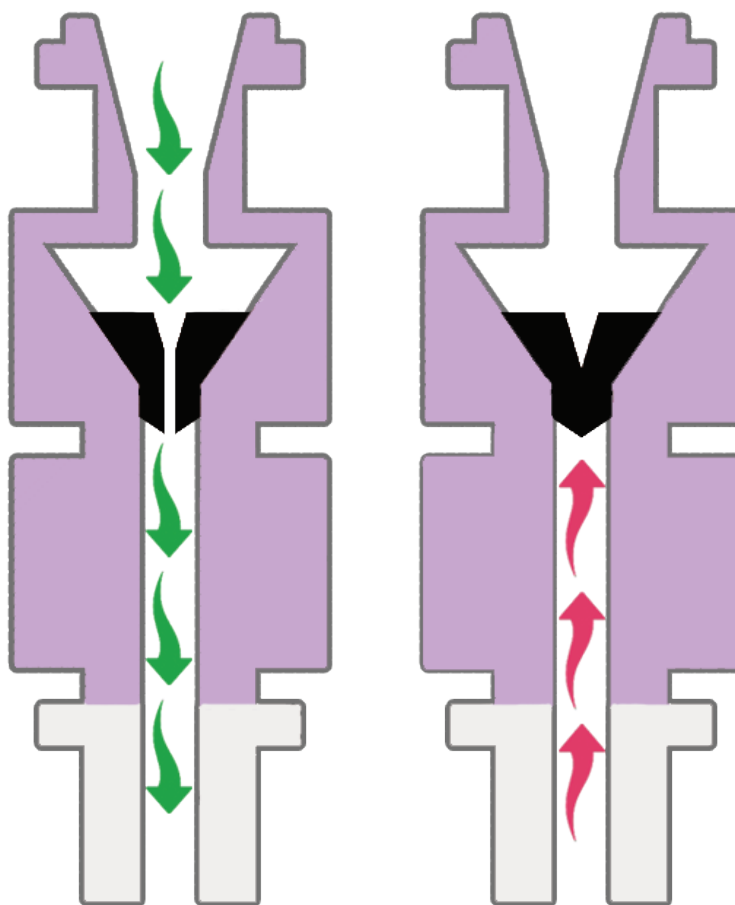
They are made of inert materials resistant to chemicals.

The use of a one-way air check valve allows for low cost safe and secure solvent extraction in your laboratory.

- ▶ No solvent evaporation. ✓
- ▶ Keep your concentration accurate for several days. ✓
- ▶ No mobile phase external contamination. ✓

360° ROTATION!

The rotation of the central part of the caps allows a good ease of installation, and also avoids any entanglement of tubes.



The membrane allows air to enter for pressure equalization.

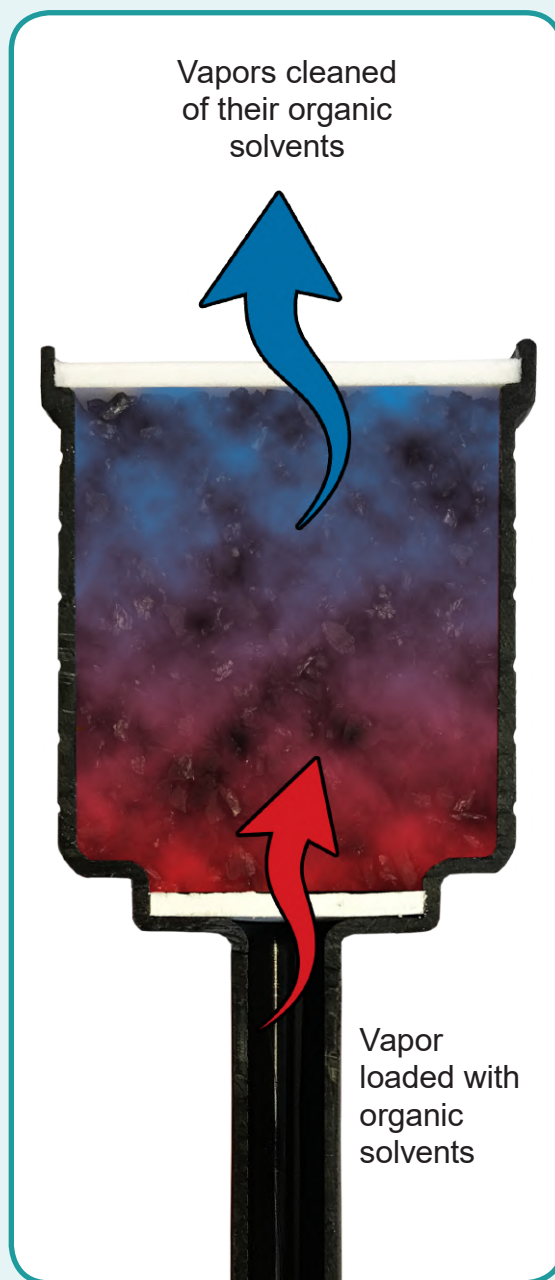
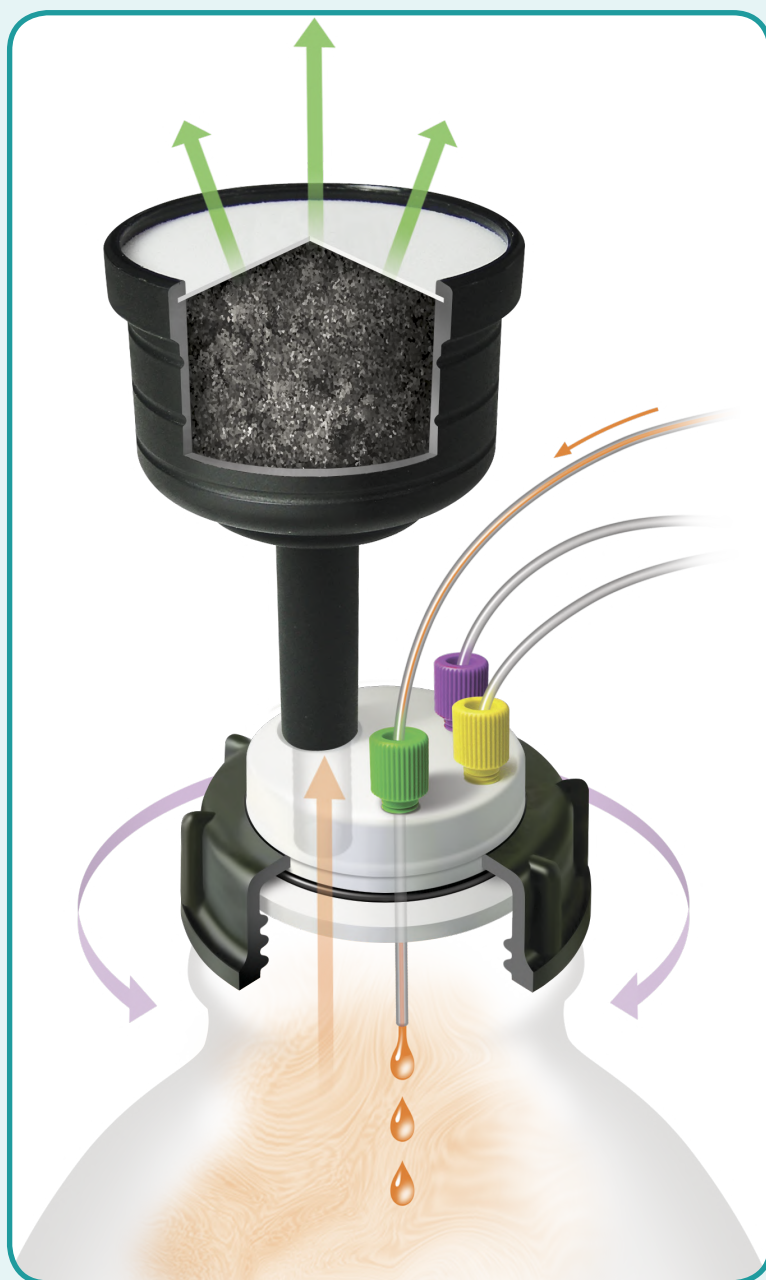
The membrane is a barrier against eluent vapours and gas leaks.

HOW DOES IT WORK ?

A TECHNOLOGY TO PROTECT YOUR HEALTH

A Smart Waste Caps is formed by an airtight cap, drilled by a variable number of holes to host effluents tubes outgoing of the HPLC system.

The main piece is a cartridge filled with activated charcoal attached to the cap. This filter allows the absorption of 98% of the solvent's vapours released by the solvent's can.



AIT France offers a diversified range of activated charcoal cartridge for the emission of eluent or solvent vapors; by special charcoal impregnation, the cartridges become an excellent barrier against concentrated acids or bases.
See page 26.

SMART WASTE CAPS

ACTIVATED CHARCOAL CARTRIDGE

ACTIVATED CHARCOAL CARTRIDGE FOR CANS FROM 2,5 TO 20 LITERS



* AD-VL

** AD-14-28

* Adapter to connect activated charcoal cartridge to Vaplock™ manifold

** Adapter to connect to thread 1/4" - 28 (like capillary fitting)

Each cartridge is delivered with a label on which you can write the commissioning date and the replacement date of your cartridge. The replacement date depends on the quantity of activated charcoal in the cartridge.

* For each charcoal filter cartridge order, a time monitoring is delivered if you ask for. Just add the letter T at the end of the reference.

DESCRIPTION	CHARCOAL QUANTITY	DURATION	REFERENCES	
			UNIT	PACK OF 3
Activated charcoal cartridge	25 gr	3 months	FC-25	FC-25-3
Activated charcoal cartridge	50 gr	6 months	FC-50	FC-50-3
Activated charcoal cartridge with a lid	50 gr	6 months	FC-50-C	FC-50-C-3
Activated charcoal cartridge	100 gr	12 months	FC-100	FC-100-3
Activated charcoal cartridge loaded with H ₂ SO ₄ for volatile base in waste eluants.	100 gr	6 to 12 months	FC-100-H2SO4	FC-100-H2SO4-3
Activated charcoal cartridge loaded with KOH for volatile acid in waste eluants.	100 gr	6 to 12 months	FC-100-KOH	FC-100-KOH-3

SMART WASTE CAPS

This activated carbon cartridge has been specially designed to trap the gas emissions at the analyzer output in LC-MS. The cartridge is studied to generate a low back pressure and thus prevent overheating of the activated carbon in contact with vapors from the LC-MS.



SMART WASTE CAPS FOR LC-MS

With an emplacement for an activated carbon cartridge and a tube inlet ID 12-15 mm (other diameter possible on request)

THREAD	REFERENCE
GL45	SW45-MS
SW55	SW55-MS
SW60	SW60-MS
Nalgene B53	SWB53-MS
Nalgene B83	SWB83-MS



ACTIVATED CHARCOAL CARTRIDGE FOR LC-MS

DESCRIPTION	CHARCOAL QUANTITY	DURATION	REFERENCE
Activated Charcoal Cartridge for LC-MS	50 gr	6 months	FC-50-MS

SMART WASTE CAPS

ACTIVATED CHARCOAL CARTRIDGE

ADAPTERS FOR ACTIVATED CHARCOAL CARTRIDGE

If you have a problem to place the can with the cartridge under the bench, we offer you 3 types of adapters which can be combined to solve all of you problems. You can see below few types of combinations. Other combinations are possible.

FC-D



FC-180



FC-90



DESCRIPTION	REFERENCE
Straight extension long piece	FC-D
90° Adapter for angled connection	FC-90
Double angled connection adapter (combination of 2 FC-90)	FC-180

FC-180



FC-180



FC-90



SMART WASTE CAPS

SPECIAL ADAPTERS* FOR JUSTRITE® CAN

* Allows to accept activated charcoal cartridge on JUSTRITE® can.



FC-AD-CPC



AD-CPC



FC-AD-JUST

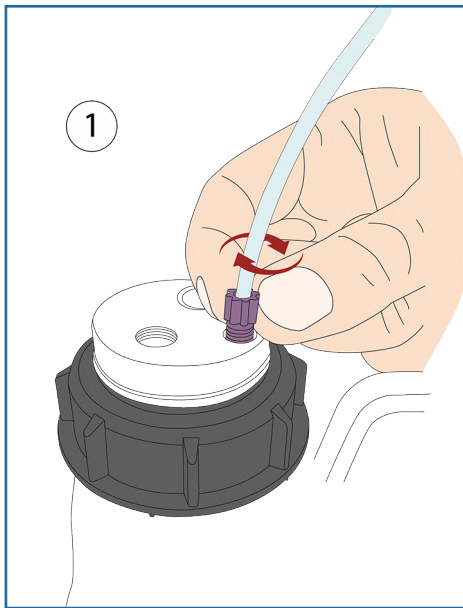


AD-D-JUST

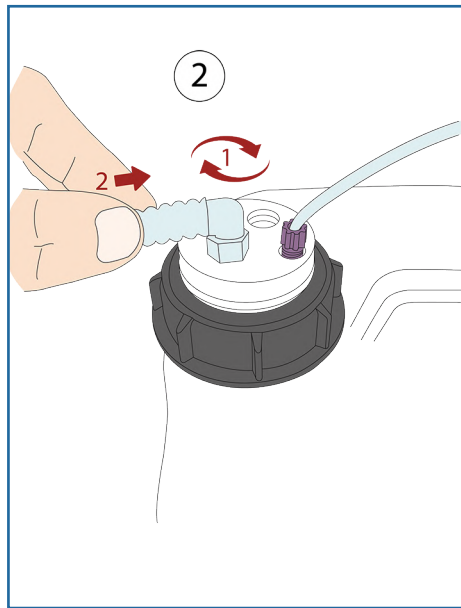
DESCRIPTION	REFERENCE
Adapter with 3 entries and a threaded barbed fitting for a direct CPC connection	AD-CPC
Adapter with 3 entries and a threaded barbed fitting for a connection on JUSTRITE® can	AD-D-JUST
Adapter with an activated charcoal cartridge location for JUSTRITE® container	FC-AD-JUST
Adapter with an activated charcoal cartridge location for CPC connection	FC-AD-CPC

SMART WASTE CAPS

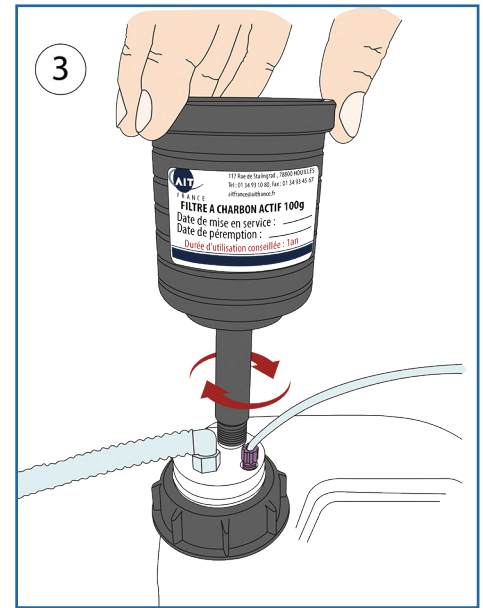
GUIDE FOR INSTALLING A SMART WASTE CAPS



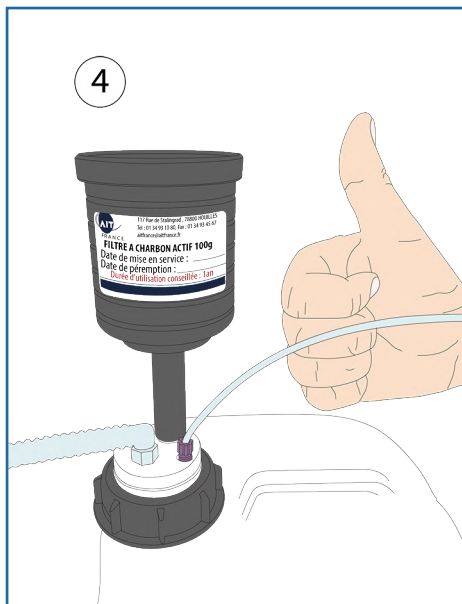
- Insert the universal capillary connector into its proper thread



- Screw the threaded barbed fitting into its proper thread on your Smart Waste Cap. Connect your tube to the threaded barbed fitting



- Screw your activated charcoal cartridge into its proper thread on your Smart Waste Caps



- Installation completed!



And do not forget to indicate the date of commissioning and the expiration date of your activated charcoal cartridge to anticipate its renewal!

SMART WASTE CAPS

SMART WASTE CAPS FOR DIN 51 / S55

AIT Smart Waste Caps for DIN 51/S55 with their universal capillary connector (external diameter 1/8" to 1/16") and threaded barbed fitting 6 to 9 mm.



SW55-4-C : 4 entries 1/8" and charcoal cartridge emplacement



SW55-1-C-1L : 1 entry 1/8", 1 threaded barbed fitting and charcoal cartridge emplacement



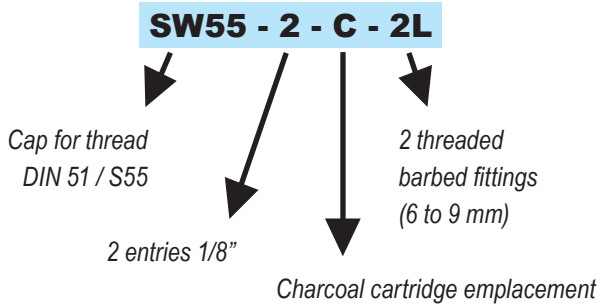
SW55-2-C-2L : 2 entries 1/8", 2 threaded barbed fittings and charcoal cartridge emplacement



SW55-1-C-3L : 1 entry 1/8", 3 threaded barbed fittings and charcoal cartridge emplacement

If you can't find the reference you want, then, create your own Smart Waste Cap even just for one item, without further cost.

Create your own reference !



SW55-4-C-1L : 4 entries 1/8", a charcoal cartridge emplacement and 1 threaded barbed fitting



SW55-5-C : 4 entries 1/8" and a charcoal cartridge emplacement



SW55-3-C-2L : 3 entries 1/8", a charcoal cartridge emplacement and 2 threaded barbed fittings



SW55-3-C-3L : 3 entries 1/8", a charcoal cartridge emplacement and 3 threaded barbed fittings

SMART WASTE CAPS

SMART WASTE CAPS THREADS

SMART WASTE CAPS FOR GL45

AIT Smart Waste Caps for GL45 with their universal capillary connector (outer diameter 1/8" to 1/16") and threaded barbed fitting.



SW45-2-C : 2 entries 1/8" and charcoal cartridge emplacement



SW45-5-C : 5 entries 1/8" and charcoal cartridge emplacement

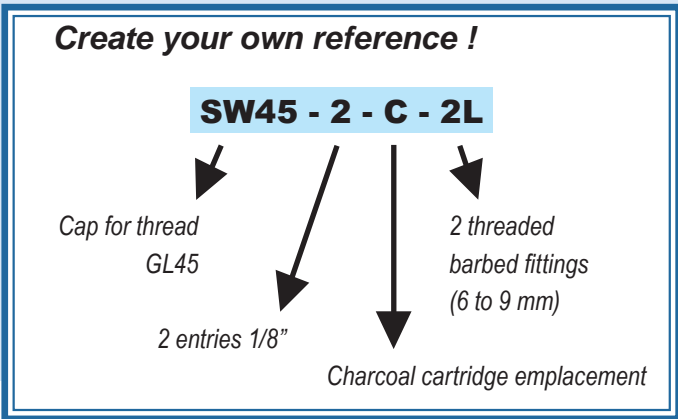


SW45-4-C-1L : 4 entries 1/8", 1 threaded barbed fitting and charcoal cartridge emplacement



SW45-1-C-2L : 1 entry 1/8", 2 threaded barbed fittings and charcoal cartridge emplacement

If you can't find the reference you want, then, create your own Smart Waste cap even just for one item, without further cost.



SW45-C-2L : a charcoal cartridge emplacement and 2 threaded barbed fittings
32 A.I.T. FRANCE



SW45-1-C-1L : 1 entry 1/8", a charcoal cartridge emplacement and 1 threaded barbed fitting



SW45-2-C-2L : 2 entries 1/8", a charcoal cartridge emplacement and 2 threaded barbed fittings



SW45-C-3L : a charcoal cartridge emplacement and 3 threaded barbed fittings
<http://www.smartcaps.fr>

SMART WASTE CAPS

SMART WASTE CAPS THREADS

SMART WASTE CAPS BURKLE DIN50

Smart Waste Caps for space-saving cans S50 equipped with their universal capillary connector (outer diameter 1/8" to 1/16") and threaded barbed fitting 6 to 9 mm.



SWB-1-C-1L : 1 entry 1/8", 1 threaded barbed fitting and charcoal cartridge emplacement



SWB-3-C : 3 entries 1/8" and charcoal cartridge emplacement



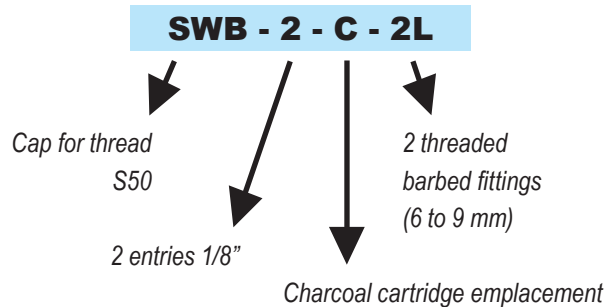
SWB-1-C-3L : 1 entry 1/8", 3 threaded barbed fittings and charcoal cartridge emplacement



SWB-4-C-1L : 4 entries 1/8", 1 threaded barbed fitting and charcoal cartridge emplacement

If you can't find the reference you want, then, create your own Smart Waste cap even just for one item, without further cost.

Create your own reference !



SWB-5-C : 5 entries 1/8" and charcoal cartridge emplacement



SWB-2-C-1L : 2 entries 1/8", 1 threaded barbed fitting and charcoal cartridge emplacement



Space saving can (5 Liters)
Ref : BS-GP

SMART WASTE CAPS

SMART WASTE CAPS THREADS

SMART WASTE CAPS FOR DIN 60 / S61

AIT Smart Waste Caps for DIN 60/S61 with their universal capillary connector (outer diameter 1/8" to 1/16") and threaded barbed fitting 6 to 9 mm.



SW60-2-C : 2 entries 1/8" and charcoal cartridge emplacement



SW60-2-C-1L : 2 entries 1/8", 1 threaded barbed fitting and charcoal cartridge emplacement

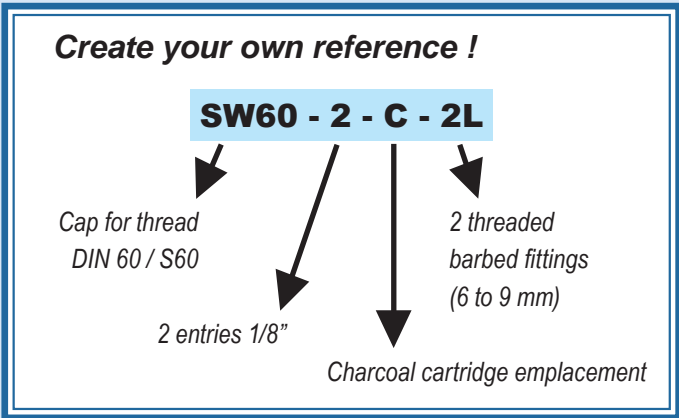


SW60-5-C-1L : 5 entries 1/8", 1 threaded barbed fitting and charcoal cartridge emplacement



SW60-1-C-4L : 1 entry 1/8", 4 threaded barbed fittings and charcoal cartridge emplacement

If you can't find the reference you want, then, create your own Smart Waste cap even just for one item, without further cost.



SW60-1-C-1L : 1 entry 1/8", a charcoal cartridge emplacement and 1 threaded barbed fitting



SW60-6-C : 6 entries 1/8" and a charcoal cartridge emplacement



SW60-2-C-4L : 2 entries 1/8", a charcoal cartridge emplacement and 4 threaded barbed fittings



SW60-C-1L : a charcoal cartridge emplacement and 1 threaded barbed fitting

SMART WASTE CAPS

SMART WASTE CAPS THREADS

SMART WASTE CAPS FOR DIN 90 / S90

AIT Smart Waste Caps for DIN 90/S90 with their universal capillary connector (outer diameter 1/8" to 1/16") and threaded barbed fitting 6 to 9 mm.



SW90-1-C-2L : 1 entry 1/8", 2 threaded barbed fittings and charcoal cartridge emplacement



SW90-4-C-4L : 4 entries 1/8", 4 threaded barbed fittings and charcoal cartridge emplacement



SW90-3-C-2L : 3 entries 1/8", 2 threaded barbed fittings and charcoal cartridge emplacement



SW90-4-C-1L : 4 entries 1/8", 1 threaded barbed fitting and charcoal cartridge emplacement

If you can't find the reference you want, then, create your own Smart Waste cap even just for one item, without further cost.

Create your own reference !

SW90 - 2 - C - 2L

Cap for thread
DIN 90 / S90

2 entries 1/8"

2 threaded
barbed fittings
(6 to 9 mm)

Charcoal cartridge emplacement



SW90-C-2L : 2 threaded barbed fittings and charcoal cartridge emplacement



SW90-C-5L : 5 threaded barbed fittings and charcoal cartridge emplacement



SMART WASTE CAPS

SMART WASTE CAPS THREADS

SMART WASTE CAPS FOR NALGENE'S® BOTTLES

AIT Smart Waste Caps for NALGENE's® bottles with their universal capillary connector (outer diameter 1/8" to 1/16") and threaded barbed fitting 6 to 9 mm.



SWB83-C-1L

THREAD REFERENCE

B53	SWB53-C-1L
B83	SWB83-C-1L



SWB83-C-3L

THREAD REFERENCE

B53	SWB53-C-3L
B83	SWB83-C-3L



SWB83-2-C

THREAD REFERENCE

B53	SWB53-2-C
B83	SWB83-2-C



SWB83-4-C-1L

THREAD REFERENCE

B53	SWB53-4-C-1L
B83	SWB83-4-C-1L



If you can't find the reference you want, then, create your own Smart Waste Cap even just for one item, without further cost.

Create your own reference !

SWB53 - 2 - C - 2L

Cap for Nalgene thread

2 entries 1/8"

2 threaded barbed fittings (6 to 9 mm)

Charcoal cartridge emplacement

SMART WASTE CAPS

SMART WASTE CAPS THREADS

LEVEL INDICATOR

Thanks to the level indicator and its integrated floater, you can check immediately the can level.

The level indicator is absolutely necessary for all the opaque cans and the metallic barrel. We can also equipped the level indicator with fittings 1/8" or 1/16" and threaded barbed fitting 6 to 9 mm.

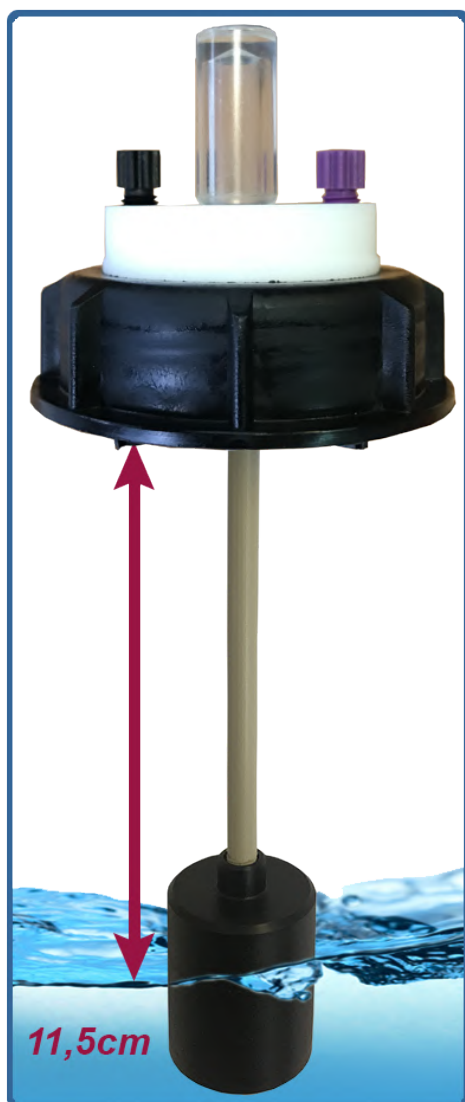
How it works ?

The level indicator is an option. So you can add it to the Smart Waste Caps reference that you want to equip.

For example, you want to equip the Smart Waste Cap following : SW45-2-C-1L with a level indicator. It becomes :

SW45-2-C-1L-LI

Please do not hesitate to contact us with any questions you may have.

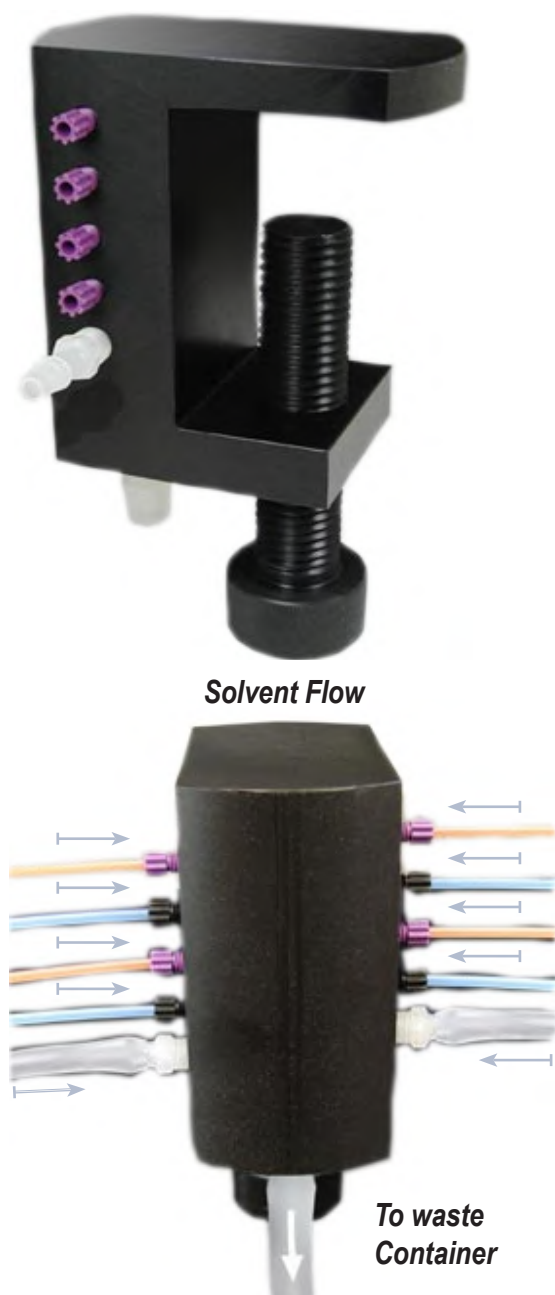


SMART WASTE CAPS

SPECIAL ADAPTERS

These 2 elements are easily fixed via their screw system and can go through the lab bench or be at the edge of the lab bench.

MULTI-MOL-8-2L



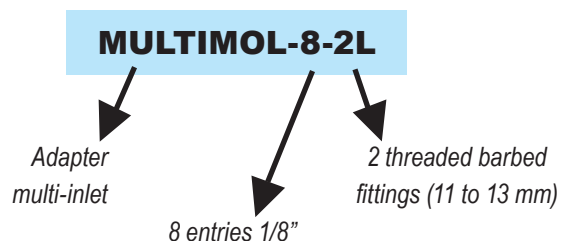
Multi-inlet system, 8 1/8" entries and 2 entries for tubes Tygon, with an outlet to a can under the lab bench (11 to 13mm in standard). The number of entries and their diameter is adjustable.

AD45-PAIL-1L



Through-hole adapter for SW45 or SW55 caps with 1 outlet for threaded barbed fitting (6 to 9mm in standard)

Create your own reference !



SMART WASTE CAPS

ADAPTERS

ALL TYPES OF ADAPTERS ARE
POSSIBLE

UNLIMITED COMBINATIONS! (AS FAR
AS POSSIBLE)



45 mm

GL45 bottle
Measures 45 mm for
external thread.



48 mm

S55 can
Measures 48 mm for
external thread.

SW45-C-1L

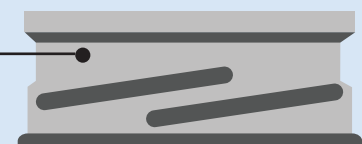
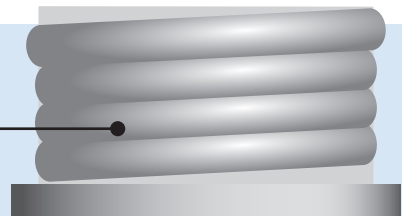


53 mm

S60 can
Measures 53 mm for
external thread.

Adapter

Thread

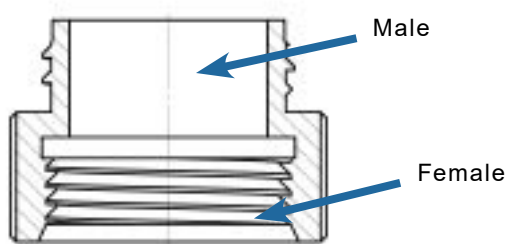
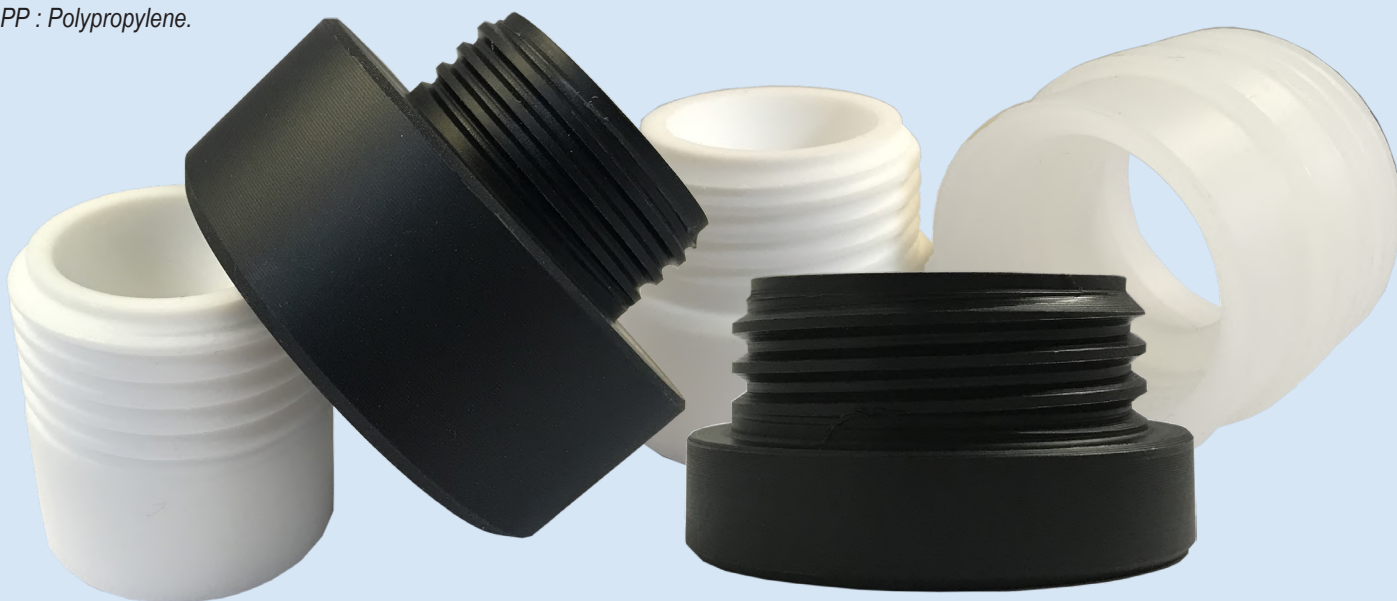


SMART WASTE CAPS

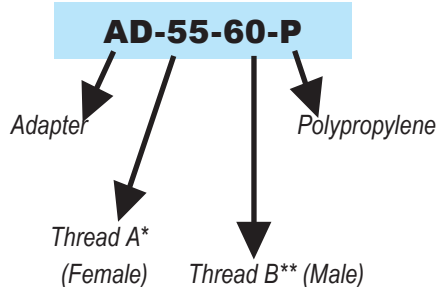
ADAPTERS

PP OR PTFE ADAPTERS FOR CANS EQUIPPED WITH A SMART WASTE CAPS

* PP : Polypropylene.



Create your own adapter!



*A = can thread

**B = Smart Waste Caps thread

THREAD A* (FEMALE)	THREAD B** (MALE)	REFERENCE***
GL45	GL32	AD-45-32-P
GL40	GL32	AD-40-32-P
GL45	GL38	AD-45-38-P
GL40	GL38	AD-40-38-P
GL40	GL45	AD-40-45-P
GL45	S55	AD-45-55-P
S55	S60	AD-55-60-P
S55	GL45	AD-55-45-P
S60	S55	AD-60-55-P

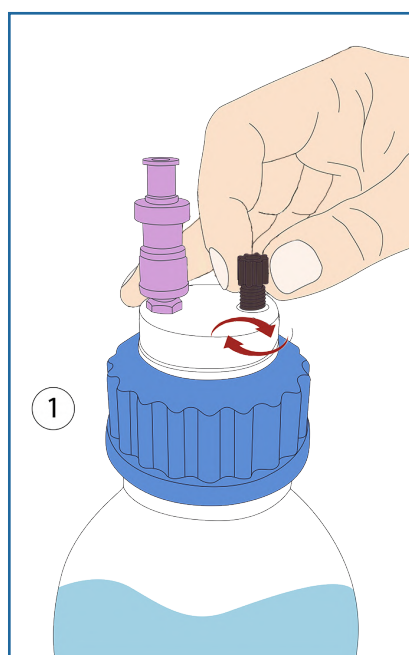
***also available in Teflon: for this, replace "P" with "T" in the reference of the desired product

SMART WASTE CAPS

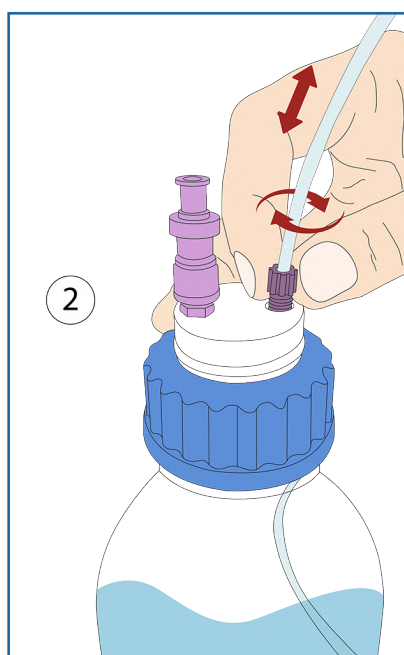
ACCESSORIES : UNIVERSAL CAPILLARY CONNECTORS

- Facilitates the connection of capillary tubes from 1 mm to 3,2 mm (1/8")
- The universal capillary connector replaces the entire nut + ferrule 1/8" and 1/16"
- The universal capillary connector ensures excellent sealing

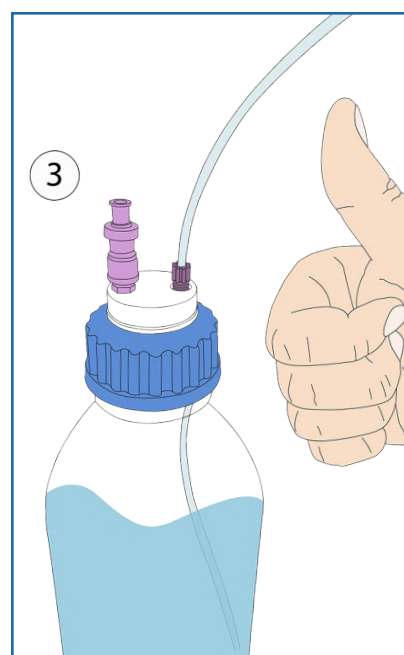
GUIDE TO CHANGE A UNIVERSAL CAPILLARY CONNECTOR :



- Insert the universal capillary connector into its proper thread, without fully tightening it.



- Insert your tube into the universal capillary connector, adjust its length and then screw the fitting until the tube stops moving.



- Installation completed!

DESCRIPTION	FOR TUBES (OD)	COLOR	QTY/PK	REFERENCE
Universal capillary connector Type I Black	of 1/16" to 1mm	Black	5	CC-ONE-1BL
Universal capillary connector Type I Violet	of 1/16" to 1mm	Purple	5	CC-ONE-1V
Universal capillary connector Type II Black	of 1/8" to 1/16"	Black	5	CC-ONE-2BL
Universal capillary connector Type II Violet	of 1/8" to 1/16"	Purple	5	CC-ONE-2V



SMART WASTE CAPS

HOW TO KNOW THE THREAD OF YOUR CAP ?

SmartCaps are available for a wide range of threads. The table below will help you to know which thread you are using. We can adapt our SmartCaps to any kind of threads.



* G = Glass

** P = Plastic

Thread	ID Cap	OD Cap	OD container	ID container	Characteristics
GL 28	26.00	27.50	28.00	19.60	Chromsystem, Recipe, 500ml buffer by Sigma
GL 32 (G*)	29.50	31.50	31.50	16.80	For Duran's containers
GL 32 (P**)	29.60	32.60	32.20	18.20	-
GL 38 (G*)	35.50	37.00	37.50	25.70	For Wheaton's and Nalgene's containers
GL 38 (P**)	-	-	-	30.60	4l BDH bottle, Fulltime Reagents
GL 38 (short)	34.00	38.20	37.80	22.20	2.5l canister by Recipe, 1l Biosolve, 10l Fresenius Kabi
38-430	35.30	37.60	37.10	27.40	Wheaton, Nalgene square-cut 500ml plastic bottle
GL40 / S 40(G*)	38.00	40.00	40.00	26.2/27	For Merck's containers
GL40 / S 40(P*)	-	-	40.60	29.30	For Merck's and Metrohm's containers
S 41 / S 42(P*)	39.00	41.00	41.60	32.60	Number DIN42 is often in the cover, Polimoon
S 41 / S 42(G*)	39.00	41.60	42.00	32.10	-
GL 45 (G*)	41.50	45.00	44.50	29.50	Established thread of laboratory bottles
GL 45 (P*)	41.50	42.50	44.50	34.70	-
S 50	45.50	51.50	50.00	40.60	Space-saving canister
S 51	45.50	50.00	48.00	40.70	Nearly identical to S 50, number DIN50 is often in the cover
B 53	50.50	54.50	53.50	39.20	For Nalgene's and Polimoon's containers
S 55	50.50	55.00	53.50	43.30	The number 51/DIN 51/HP 51 is often in the cover
S 60 / S 61	55.50	61.00	59.00	48.20	Number 61 is often in the cover, Mauser 13, RPC containers
B 63	58.50	63.00	62.00	37.10	For Nalgene's containers
S 65	62.00	65.50	64.50	50.20	For Kautex's containers (round canister)
S 70 / S 71	66.00	71.50	70.00	59.40	The number 71 is often in the cover, Rieke 70mm
GLS 80	78.00	83.00	80.00	64.00	Established wide neck opening bottle
B83	83.00	90.00	88.00	65.30	For containers of the brands Kautex and Carboy 80mm
S90	85.00	90.50	88.00	78.50	The number D90 is often in the cover

SMART WASTE CAPS

STARTER KIT SMART WASTE CAPS

DESCRIPTION	REFERENCE
1x 5L space-saving can, 1x SmartWasteCaps S50 (2x entries 1/8", 1x exhaust filter emplacement & 2x threaded barbed fittings), 1x exhaust filter, 1x plug* for barbed fitting & 1x plug* for 1/8" nut	KIT-SW50
1x 5L can, 1x SmartWasteCaps S45 (2x entries 1/8", 1x exhaust filter emplacement & 2x threaded barbed fittings), 1x exhaust filter, 1x plug* for barbed fitting & 1x plug* for 1/8" nut	KIT-SW45
1x 10L can, 1x SmartWasteCaps S55 (2x entries 1/8", 1x exhaust filter emplacement & 2x threaded barbed fittings), 1x exhaust filter, 1x plug* for barbed fitting & 1x plug* for 1/8" nut	KIT-SW55
1x 20L can, 1x SmartWasteCaps S60 (2x entries 1/8", 1x exhaust filter emplacement & 2x threaded barbed fittings), 1x exhaust filter, 1x plug* for barbed fitting & 1x plug* for 1/8" nut	KIT-SW60

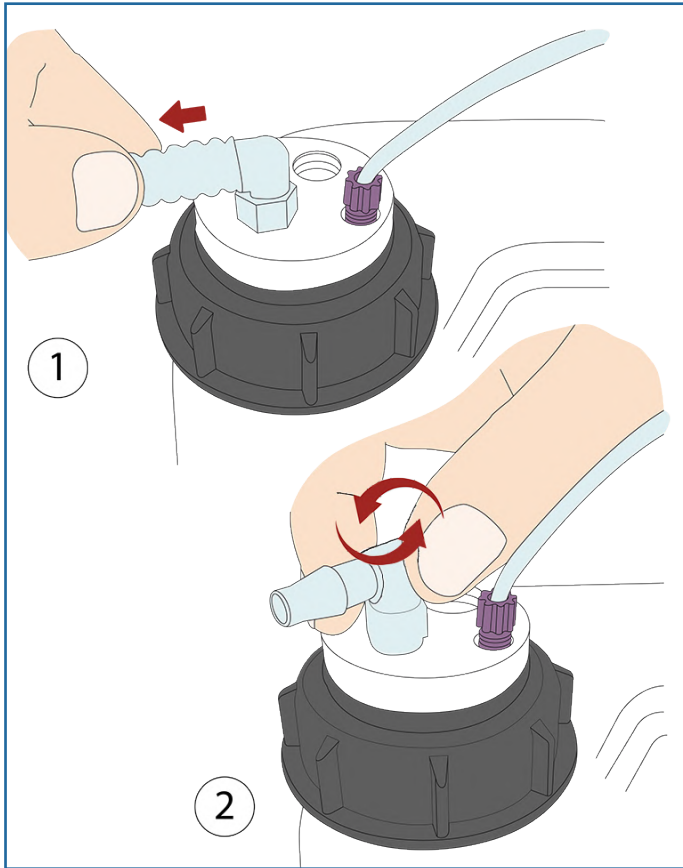


* Blind plugs for capillary entrie and threaded barbed fitting

SMART WASTE CAPS

ACCESSORIES : *THREADED BARBED FITTINGS*

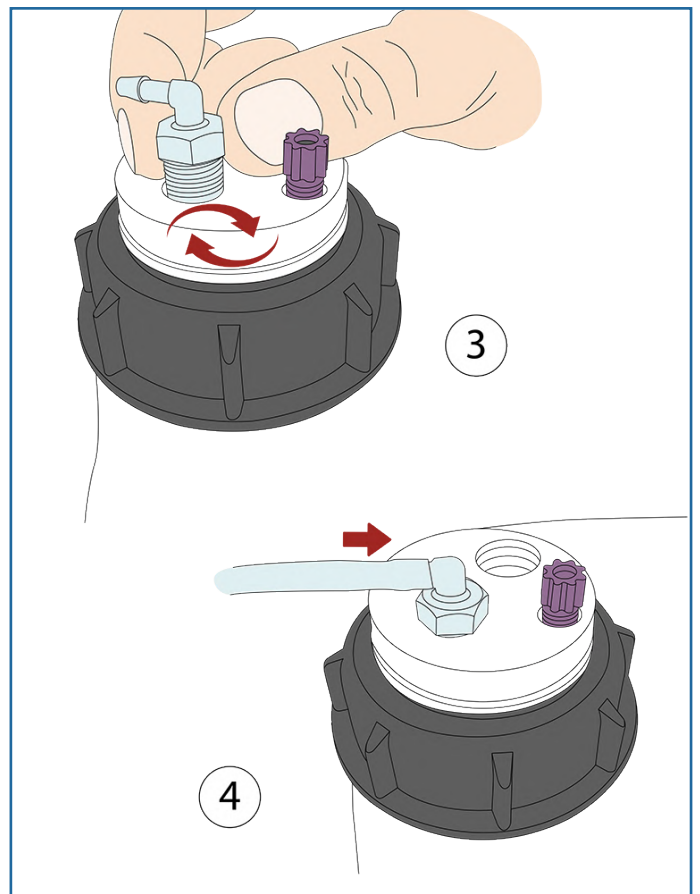
GUIDE FOR THREADED BARBED FITTING CHANGE :



Remove the tube from the threaded barbed fitting to change, and then unscrew the threaded barbed fitting.



Screw the new threaded barbed fitting and insert your new tube. Your new connection is ready!



SMART WASTE CAPS

ACCESSORIES : THREADED BARBED FITTINGS*



*The illustrations of the products are in CAD and are not contractual.

The threaded barbed fittings are made of translucent PP.

STRAIGHT THREADED BARBED FITTING / PER UNIT

DESCRIPTION	TUBE DIAMETER (ID)	REFERENCE
Straight threaded barbed fitting	3 to 4 mm	RD-34
Straight threaded barbed fitting	5 to 6 mm	RD-56
Straight threaded barbed fitting	6 to 9 mm	RD-69
Straight threaded barbed fitting	9 to 11 mm	RD-911



RD-911



RD-69



RD-56



RD-34

ANGLED THREADED BARBED FITTING / PER UNIT

DESCRIPTION	TUBE DIAMETER (ID)	REFERENCE
Angled threaded barbed fitting	3 to 4 mm	RC-34
Angled threaded barbed fitting	5 to 6 mm	RC-56
Angled threaded barbed fitting	6 to 9 mm	RC-69
Angled threaded barbed fitting	9 to 11mm	RC-911



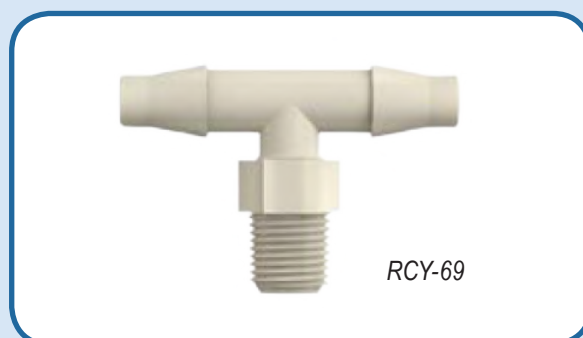
RC-56



RC-69

DOUBLE ANGLED THREADED BARBED FITTING / PER UNIT

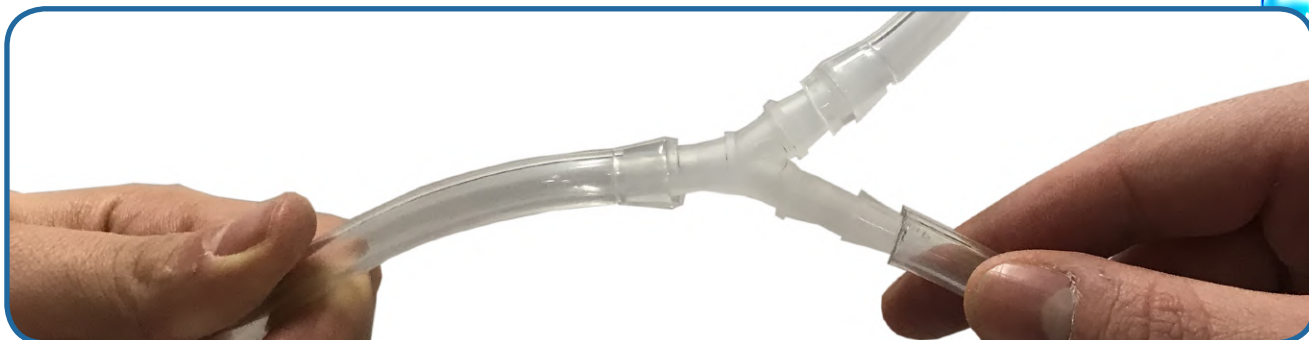
DESCRIPTION	ID	REFERENCE
Double angled threaded barbed fitting	5 to 6 mm	RCY-56
Double angled threaded barbed fitting	6 to 9 mm	RCY-69



RCY-69

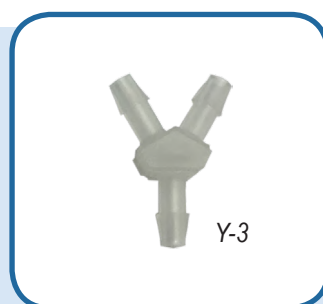
SMART WASTE CAPS

ACCESSORIES : CONNECTORS AND ADAPTERS



Y CONNECTORS, PER UNIT

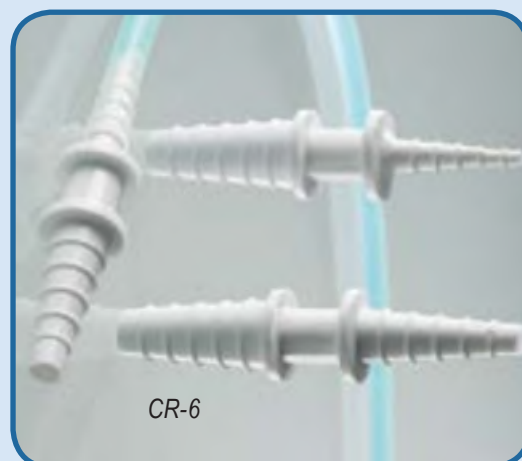
DESCRIPTION	TUBE ID	REFERENCE
Y-Connector 3 mm	3 mm	Y-3
Y-Connector 5 mm	5 mm	Y-5
Y-Connector 7 mm	7 mm	Y-7
Y-Connector 9 mm	9 mm	Y-9
Y-Connector 11 mm	11 mm	Y-11



CONICAL REDUCERS AND ADAPTERS

FOR DIFFERENT SIZES OF TUBES

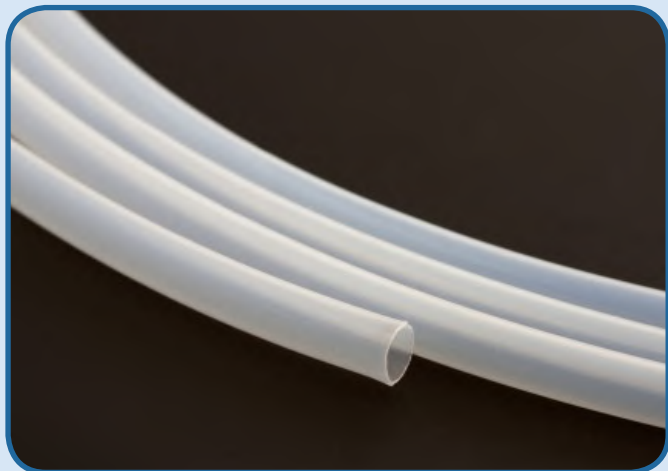
INLET DIAMETER	OULET DIAMETER	REFERENCE
4,2 - 8 mm	4,2 - 8 mm	CR-1
10,5 - 16 mm	6,5 - 12 mm	CR-3
11 - 15 mm	7 - 12 mm	CR-6



SMART WASTE CAPS

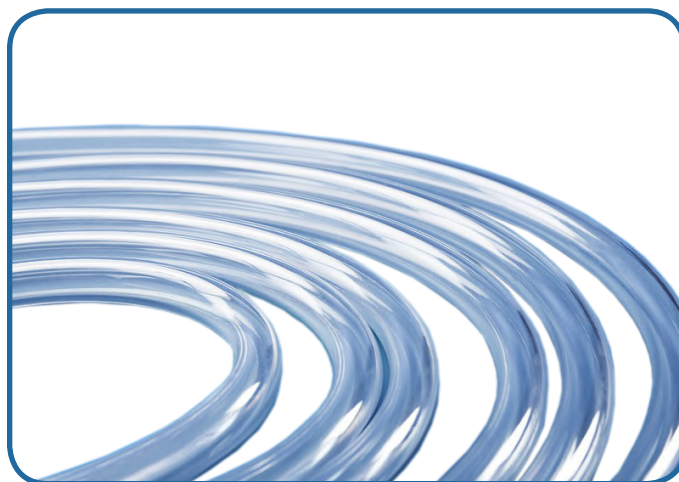
ACCESSORIES : TUBES AND BLIND PLUGS

PTFE TUBES



OD	ID	REFERENCE	QUANTITY
1/4"	6,3 mm	TP14	1 meter
3/16"	3 mm	TP316	1 meter
1/8"	1,6 mm	TP18	1 meter
1/16"	1,0 mm	TP16	1 meter

TYGON™ TUBES



OD	ID	REFERENCE	QUANTITY
9,5 mm	6,4 mm	TYG-64	1 meter
19,1 mm	12,7 mm	TYG-127	1 meter

BLIND PLUGS

THEY CLOSE THE UNUSED INLETS OF YOUR SMART WASTE CAPS



FOR	REFERENCE	QUANTITY
1/8" or 1/16" fitting	VP-F18	Per 10
Threaded barbed fitting	VP-LEAK	Per 5
Charcoal cartridge fitting	VP-CA	Unit

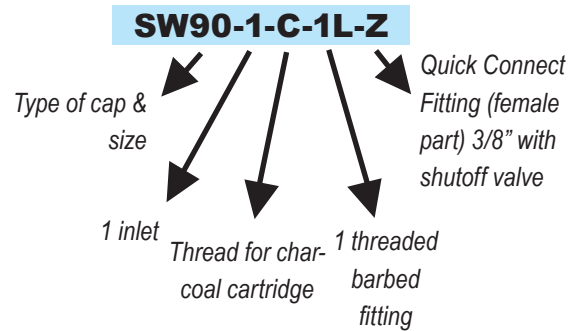
SMART WASTE CAPS

ACCESSORIES : QUICK CONNECT FITTINGS

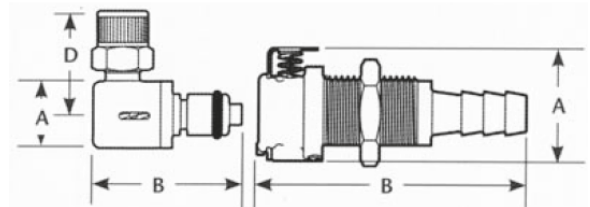


SMART HEALTHY CAPS OR SMART WASTE CAPS WITH QUICK CONNECT FITTINGS (WITH OR WITHOUT SHUTOFF VALVE)

Create your own reference!



A = Height/Diameter (mm)
 B = Total length (mm)
 D = Elbow radial length (mm)



FEMALE PART

DESCRIPTION	OUTLET	PASSAGE	REFERENCE	A	B
Quick Connect (female part) without shutoff valve	1/16" (1,6 mm)	3,2mm	S	22,35	35,56
	1/8" (3,2 mm)	3,2mm	T	22,35	41,91
	1/4" (6,4 mm)	3,2mm	U	22,35	46,99
	3/8" (9,5mm)	6,4mm	V	25,40	49,53
Quick Connect (female part) with shutoff valve	1/16" (1,6 mm)	3,2mm	W	22,35	35,56
	1/8" (3,2 mm)	3,2mm	X	22,35	41,91
	1/4" (6,4 mm)	3,2mm	Y	22,35	46,99
	3/8" (9,5mm)	6,4mm	Z	25,40	49,53

ASK US FOR ADVICE FOR YOUR CUSTOM CONFIGURATIONS!

SMART WASTE CAPS






ACCESSORIES : QUICK CONNECT FITTINGS

CHOOSE THE MALE QUICK CONNECT FITTING THAT BEST SUITS YOUR NEEDS AND MODULATE THE CONNECTION ACCORDING TO YOUR WISHES.

MALE PART

SW55-C-Z &
QC64-38-CD



TERMINATION	OUTLET	PASSAGE	REFERENCE WITH SHUTOFF	REFERENCE NO SHUTOFF	A	B	D
	1/16" (1,6mm)	3,2mm	QC32-116-CD-C	QC32-116-CD	12,70	20,32/ 37,34	-
	1/8" (3,2mm)	3,2mm	QC32-18-CD-C	QC32-18-CD	12,70	26,67/ 42,42	-
	1/4" (6,4mm)	3,2mm	QC32-14-CD-C	QC32-14-CD	12,70	30,48/ 43,43	-
	1/4" (6,4mm)	3,2mm	QC32-14-CC-C	QC32-14-CC	12,70	27,69/ 30,73	22,86
	1/4-28	3,2mm	QC32-14-TFP-C	QC32-14-TFP	18,29	39,37	-
	1/4" (6,4mm)	6,4mm	QC64-14-CD-C	QC64-14-CD	16,00	34,29/ 50,80	-
	3/8" (9,5mm)	6,4mm	QC64-38-CD-C	QC64-38-CD	16,00	34,29/ 46,23	-
	1/4" (6,4mm)	6,4mm	QC64-14-CC-C	QC64-14-CC	16,00	30,99/ 34,54	24,38
	3/8" (9,5mm)	6,4mm	QC64-38-CC-C	QC64-38-CC	16,00	32,51/ 36,06	24,38

BEWARE : MALE / FEMALE COMPATIBILITY IS ONLY ENSURED IF THE PASSAGE DIAMETER IS THE SAME FOR BOTH PARTS!